

# Accessible Web Conferencing Update

Andrew Kirkpatrick  
Adobe Systems  
March 24, 2010



- Adobe has a cross-product accessibility team
- Supports accessibility in
  - Product requirements
  - Product development
  - Standards committees
  - Relationships with assistive technology vendors
  - Information for customers in conjunction with product teams

**ADOBE<sup>®</sup> ACCESSIBILITY**

# WHAT IS ADOBE ACROBAT CONNECT?

# What is Adobe Acrobat Connect?

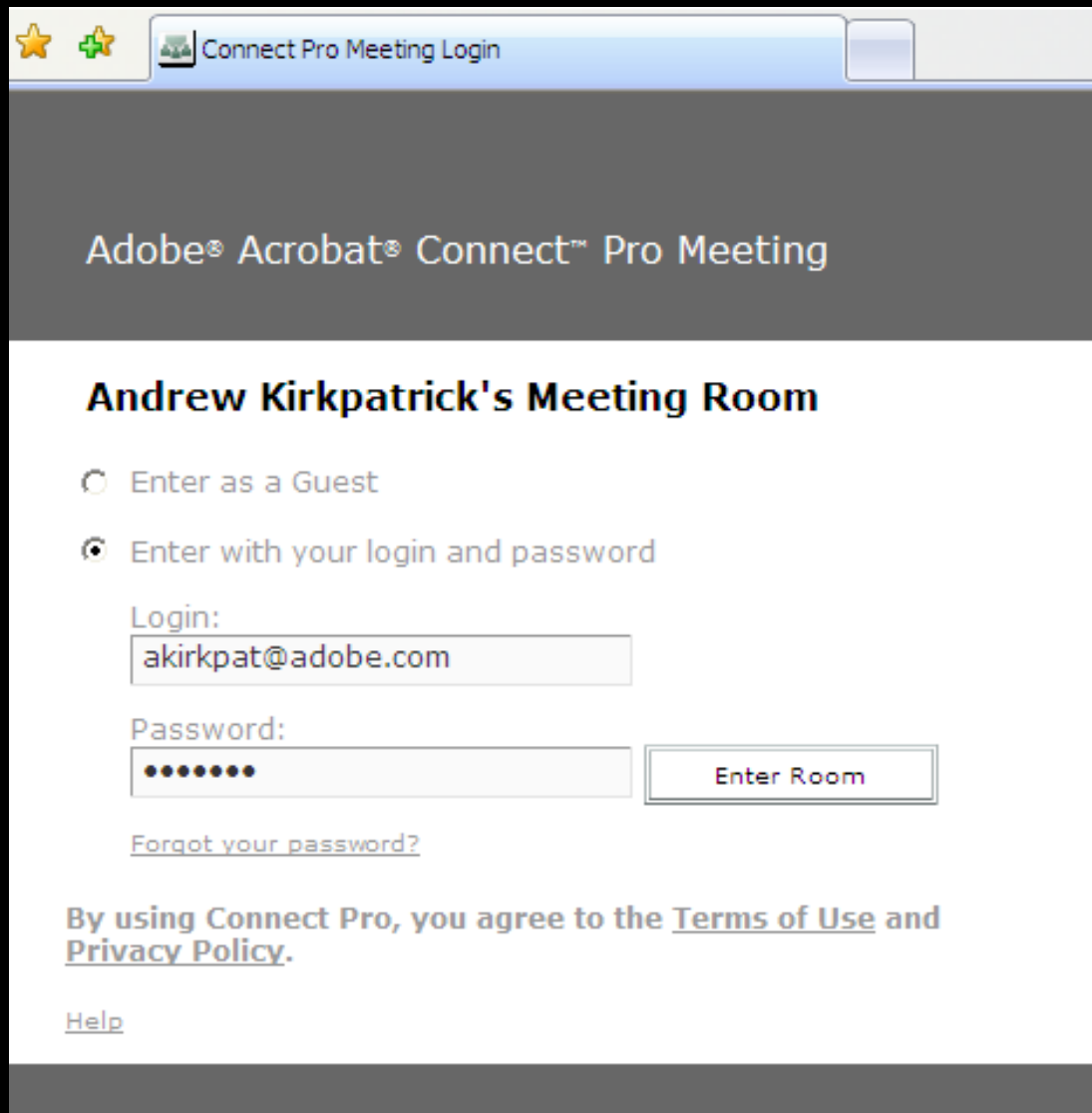
- Adobe Acrobat Connect Professional is usually referred to simply as “Connect Pro”.
- Adobe Acrobat Connect is a tool used for live web based meetings.



# What Features Does Connect Provide?

- Connect Pro offers features in “pods”
- Sharing
  - Document sharing
  - Screen sharing
- VOIP
- Chat
- Notes
- Whiteboard
- Polls
- Session recording

# Adobe Acrobat Connect Professional



The screenshot shows a web browser window with the title "Connect Pro Meeting Login". The page content includes the Adobe Acrobat Connect Pro Meeting logo, the meeting room name "Andrew Kirkpatrick's Meeting Room", and two radio button options for login: "Enter as a Guest" and "Enter with your login and password". The second option is selected. Below the options are input fields for "Login:" (containing "akirkpat@adobe.com") and "Password:" (containing seven dots). An "Enter Room" button is positioned to the right of the password field. A link for "Forgot your password?" is located below the password field. At the bottom, there is a disclaimer: "By using Connect Pro, you agree to the Terms of Use and Privacy Policy." and a "Help" link.

Adobe® Acrobat® Connect™ Pro Meeting

## Andrew Kirkpatrick's Meeting Room

Enter as a Guest

Enter with your login and password

Login:

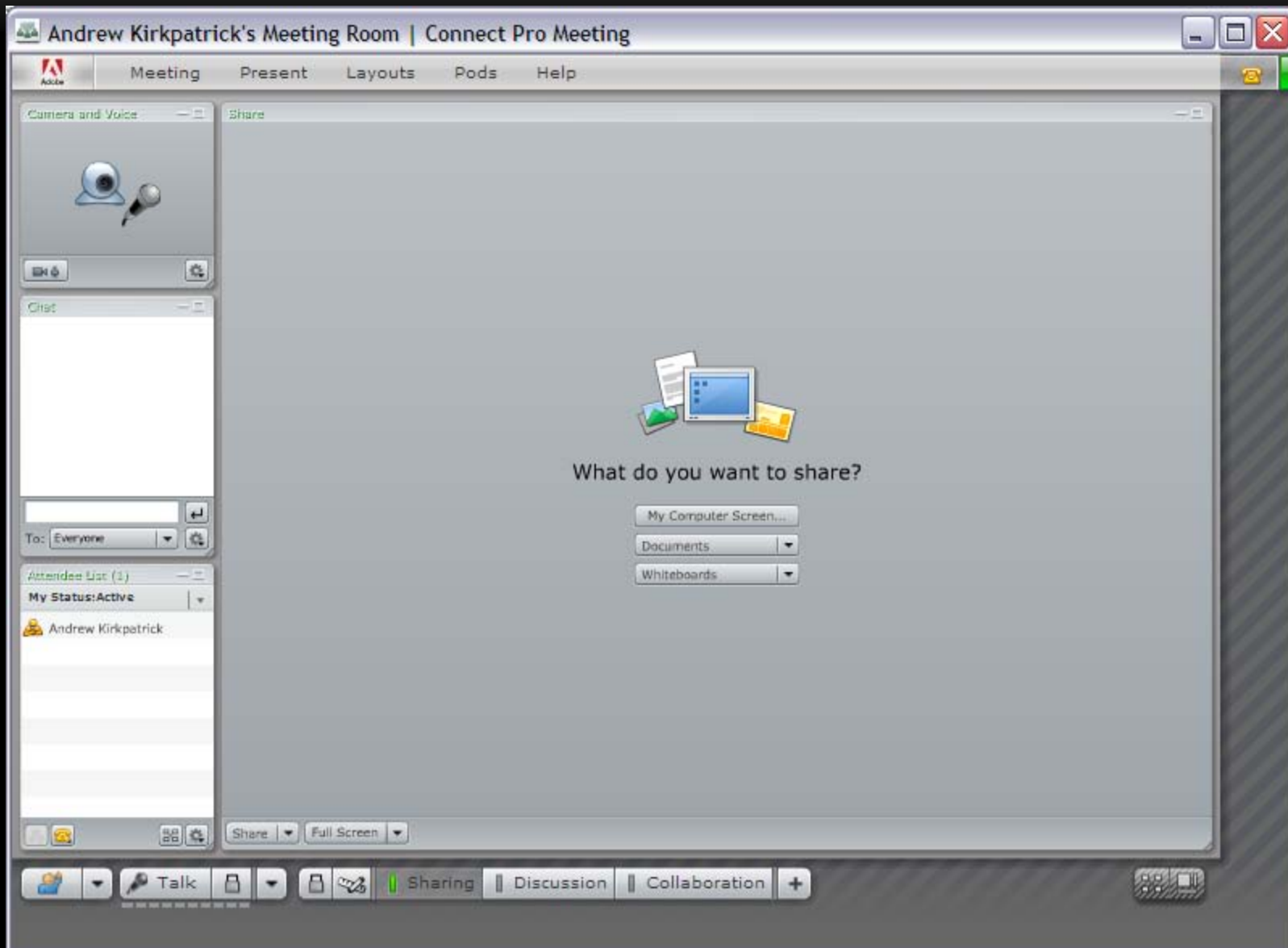
Password:

[Forgot your password?](#)

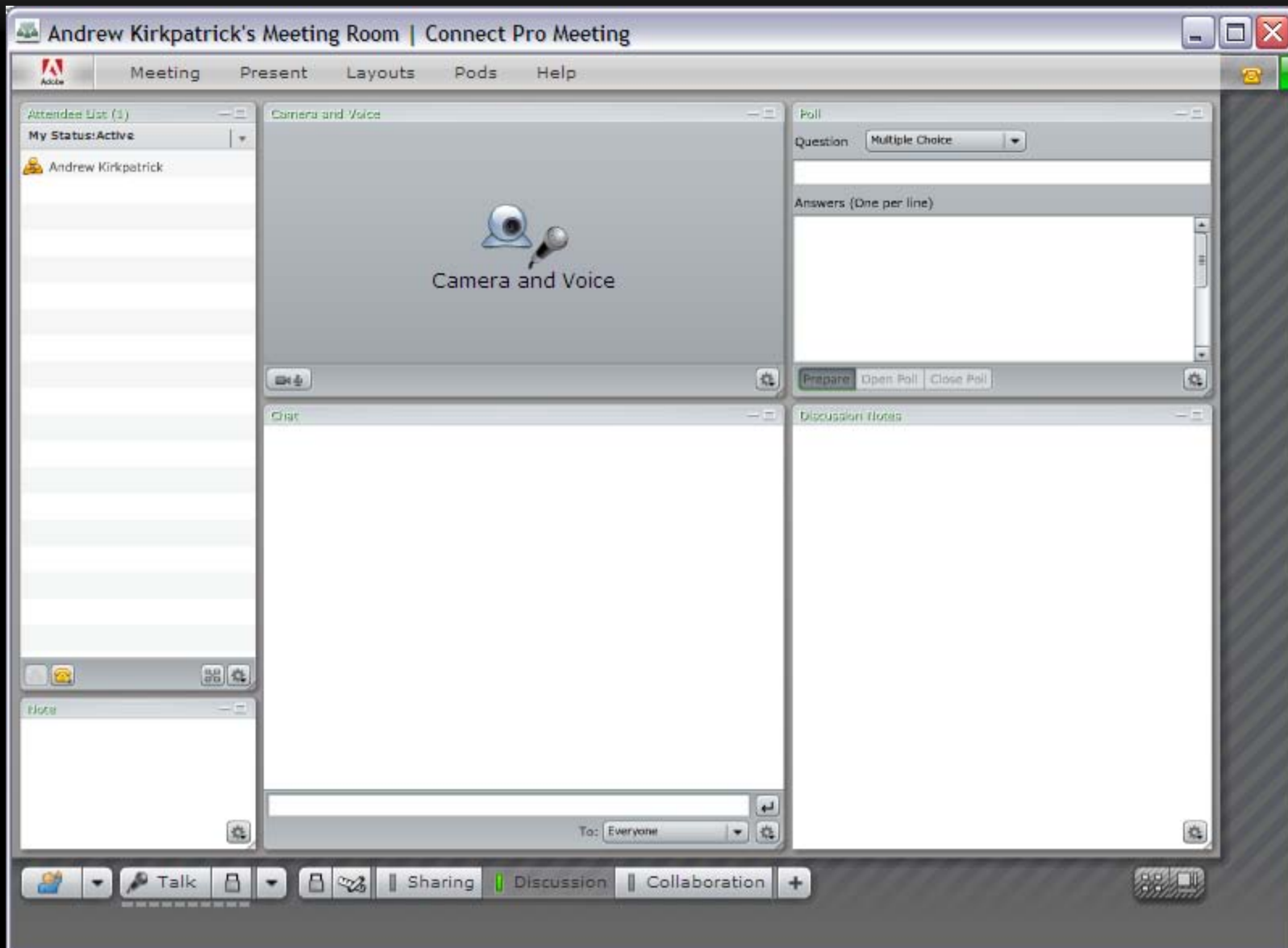
By using Connect Pro, you agree to the [Terms of Use](#) and [Privacy Policy](#).

[Help](#)

# Adobe Acrobat Connect Professional



# Adobe Acrobat Connect Professional

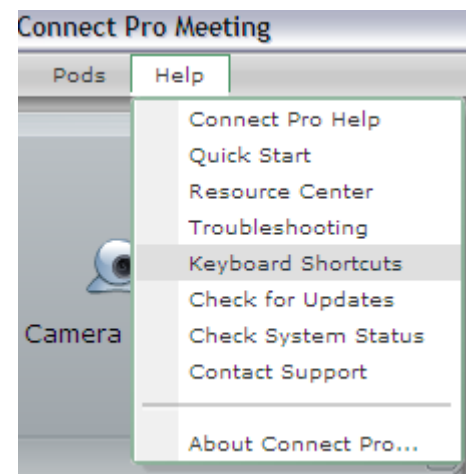




# ACCESSIBILITY IN CONNECT PRO

# Keyboard Access to Connect Pro

- Connect Pro provides basic keyboard support.
- Key pods are available in the tab order
- Shortcuts are provided for several key features in the Connect Pro menu system.
- Focus is customizable, but only at the Connect system level.
- <http://kb2.adobe.com/cps/407/kb407024.html>



# Keyboard Access to Connect Pro

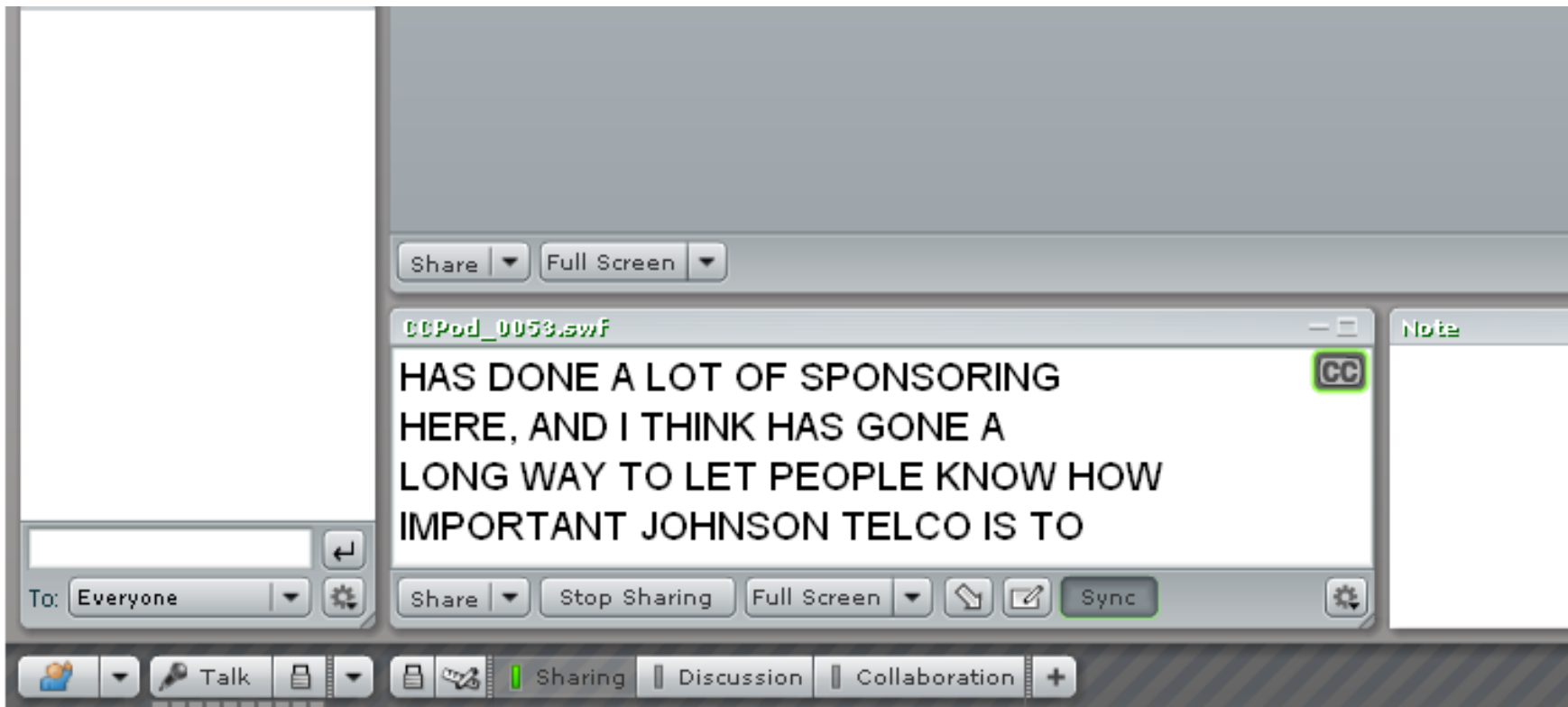
Shortcut	Use
CTRL+M	Toggle Microphone on (locked) or off.
CTRL+UP-ARROW	Toggle Raise-Hand status.
CTRL+.	Toggle Full Screen mode. Applies to currently selected Share pod.
CTRL+'	Promote to host. Requires selected item(s) in Attendee List.
CTRL+]	Demote to participant. Requires selected item(s) in Attendee List.
CTRL+/ CTRL+,	Promote to Presenter. Requires selected item(s) in Attendee List. Start/Stop Recording (toggle). For Start, brings up the Start Recording Dialog.
CTRL+\	End meeting. Brings up the End Meeting Dialog.
CTRL+[	Start/Stop Desktop Sharing. Applies to currently focused Share pod.
CTRL+SPACE	Bring up first application bar Menu for keyboard navigation .

# Access for People Who are Deaf or Hard of Hearing

- Connect Pro offers support for real-time closed captioning.
- Vendors that support captioning in Connect include:
  - Caption Colorado (<http://>)
  - WGBH Media Access Group (<http://>)
  - Caption First (<http://www.captionfirst.com>)
- Captions can be turned off by any user
- Users have control over display – three font sizes and one inverted contrast option.
- Captions from recorded sessions are also recorded.

# Adobe Acrobat Connect

- Real-time captioning support



# Assistive Technology Support in Connect

- Support for assistive technologies is a significant limitation of Connect Pro.
- Screen reader users can log into a Connect Pro meeting, but very little of the user interface is directly accessible.
- Screen reader users can share their screen, with some difficulty.

# How Can We Use Connect Accessibly?

- Using Connect Pro to hold an accessible meeting is possible, but requires some workarounds (equivalent facilitation).

# How Can We Use Connect Accessibly?

- Simple meetings can avoid some issues, providing alternative access to some features is required.
- Examples:
  - Screen sharing – Screen sharing requires that the presenter self-audio-describing information on your screen.
  - Document sharing – documents can be shared in advance.
  - VOIP – can be used accessibly, provided that captioning is available. Chat pod can be used for speaking into the meeting.



# How is Adobe Addressing Connect Pro Accessibility?

- Adobe is planning improvements to improve and simplify accessibility support in the next major release of Adobe Acrobat Connect.
- In order to help identify and prioritize issues and needed enhancements for Connect, Adobe has already worked with and will continue to work with some of its consulting and advocacy partners such as the AFB Consulting, The Paciello Group, and the SSBART Group.

# How is Adobe Addressing Connect Pro Accessibility?

- Adobe has also conducted focus groups with government and education customers (including users with disabilities) to help clarify the priorities for these customers with regard to accessibility.
- In addition, the Connect team welcomes feedback from all current and prospective users of Adobe Acrobat Connect and is willing to present on current capabilities and gather feedback and feature improvement requests from such a group of interested users.

- Adobe Accessibility Resource Center  
[adobe.com/accessibility](https://adobe.com/accessibility)
- Adobe Accessibility Blog  
[blogs.adobe.com/accessibility](https://blogs.adobe.com/accessibility)

Andrew Kirkpatrick

Sr. Product Manager, Accessibility

[akirkpat@adobe.com](mailto:akirkpat@adobe.com)

---

**ADOBE® ACCESSIBILITY**

